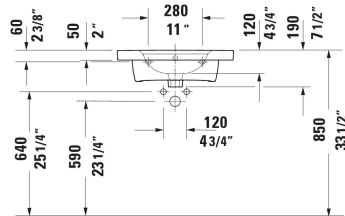
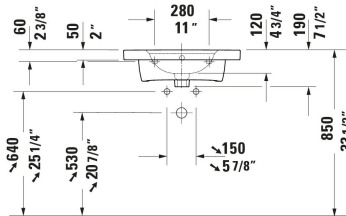
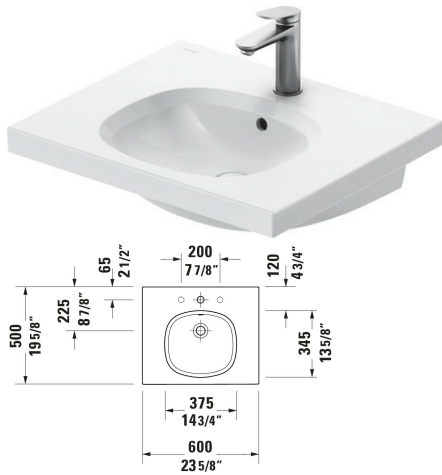


**Aurena Wall Mounted Sink # 238760..00 / 238760..00 / 238760..00**

| < 23 5/8 " > |



Wall Mounted Sink	Dimension	Weight	Order number
Rectangular, Number of basins: 1 Middle, Includes faucet deck: Yes, Number of faucet holes: 1 Middle, Overflow: Yes, Number of pre-marked faucet holes: 1, incl. push-open waste, Includes ceramic drain cover, Underside glazed, Back side glazed: No, 23 5/8 "			
<b>Colors</b>			
AA White HygieneGlaze Plus (an antibacterial ceramic glaze that provides almost indefinite effectiveness) AC White Satin Matt HygieneGlaze Plus (an antibacterial ceramic glaze that provides almost indefinite effectiveness) AF Black Matt HygieneGlaze Plus (an antibacterial ceramic glaze that provides almost indefinite effectiveness)			
<b>Variant</b>			
● ● White High Gloss	23 5/8 "x4 3/4 "	39.683 lb	238760..00
● ● White Satin Matte	23 5/8 "x4 3/4 "	39.683 lb	238760..00
● ● Black Matte	23 5/8 "x4 3/4 "	39.683 lb	238760..00
<b>Suitable products</b>			
Console Number of storage surface: 1, Number of towel rails: 1, Pedestal color: Nickel Brushed Aluminum, Adjustable height, 23 x 19 3/8 " x 19 3/8 "			AU4580
Console Number of storage surface: 1, Number of towel rails: 1, Pedestal color: Nickel Brushed Aluminum, Adjustable height, 23 x 19 3/8 " x 19 3/8 "			AU4581
Vanity Cabinet Number of drawers: 2, Number of towel rails: 1, Without handle, Siphon cut-out: Yes, Panel: Yes, Slow close, Pressure inlet, Profile: Nickel, Brushed, Aluminum, Drawer organizer Optional, Feet Yes, Adjustable height, 23 x 19 3/8 "	23 x 19 3/8 "		AU4571

**Aurena Wall Mounted Sink # 238760..00 / 238760..00 /  
238760..00**

|< 23 5/8 " >|

Vanity Cabinet Number of drawers: 2, Number of towel rails: 1,  
Without handle, Siphon cut-out: Yes, Panel: Yes, Slow close,  
Pressure inlet, Profile: Nickel, Brushed, Aluminum, Drawer  
organizer Optional, Feet Yes, Adjustable height, 23 x 19 3/8 "

23 x 19 3/8 "

AU4570

*All drawings contain the necessary measurements which are subject to standard tolerances. They are stated in inch & mm and are non-binding. Exact measurements, in particular for customized installation scenarios, can only be taken from the finished ceramic piece.*