

DOUBLE-ARM WALL MIRROR

DESCRIPTION

TWO SIDED MIRROR

- 10X MAGNIFICATION
- 1X MAGNIFICATION

FRAME, ARM & BRACKET

- BRACKET FOR WALL MOUNTING W/ COVER PLATE
- ROUND FRAME WITH 2 WAY 360° ROTATION
- 14.6" EXTENSION ARM W/ 180° ROTATION

MATERIALS

- OPTICAL GLASS
- BRASS OVER STEEL
- FINISH AS SELECTED, LACQUER OVER NICKEL COATING

WEIGHT

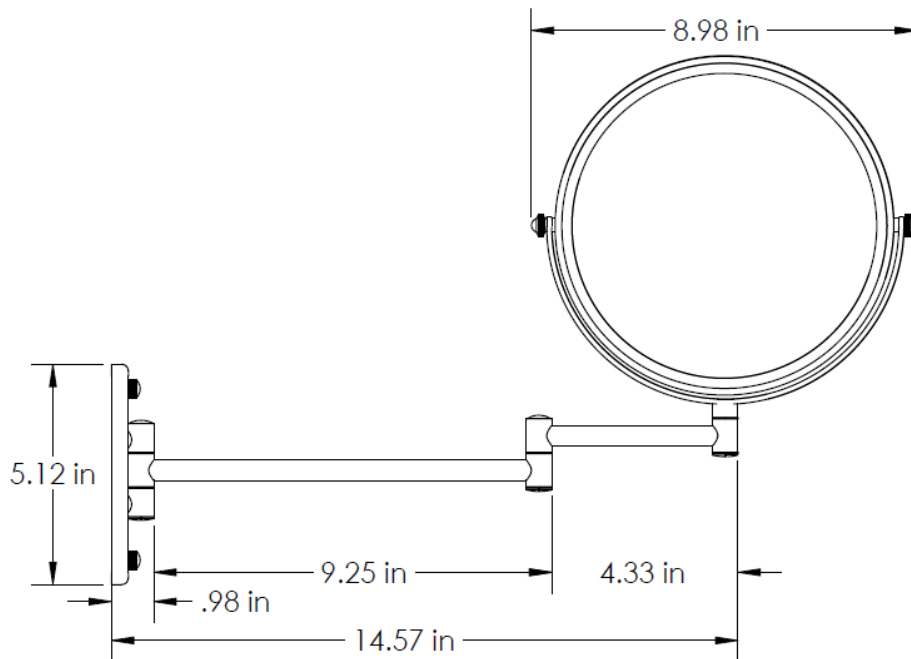
1.8 LBS

MODEL NUMBERS

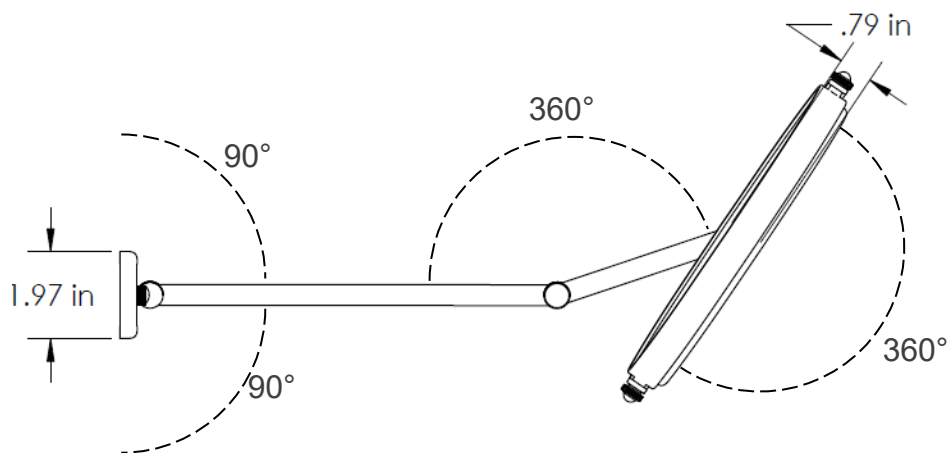
- 21140 CHROME
- 21170 BRUSHED NICKEL
- 21180 POLISHED NICKEL
- 211130 BRUSHED BRASS
- 211150 MATTE BLACK

REQUIRED FOR APPROVAL

- FINISH SAMPLE
- PROTOTYPE/ SAMPLE
- SHOP DRAWINGS



SIDE VIEW



TOP VIEW



Changing the Way You See Yourself