

CL.1 Lavatory spout, wall-mounted without drain - Chrome

CL.1

13 800 705



- 7-7/8" Projection
- Rigid spout
- Rectangular aerator with 40 individual streams
- 1-1/2" hole diameter
- lead-free
- 1/2" connection
- Plug-in connection mounting
- Water flow rate limited to max. 1.2 gpm
- This product can help a building meet the requirements of Green Building Rating Systems, e.g. LEED®, BREEAM®, DGNB

	Chrome	13 800 705-00
	Brushed Platinum	13 800 705-06
	Dark Brass matte	13 800 705-16
	Dark Bronze matte	13 800 705-17
	Dark Chrome	13 800 705-19
	Brushed Champagne (22kt Gold)	13 800 705-46
	Champagne (22kt Gold)	13 800 705-47
	Brushed Dark Platinum	13 800 705-99

Required article

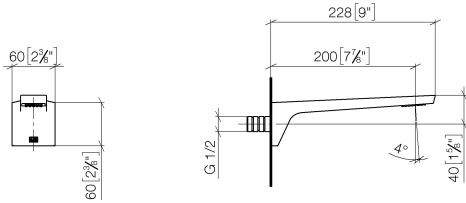
Rough-in adapter -

35 080 970-90
0010

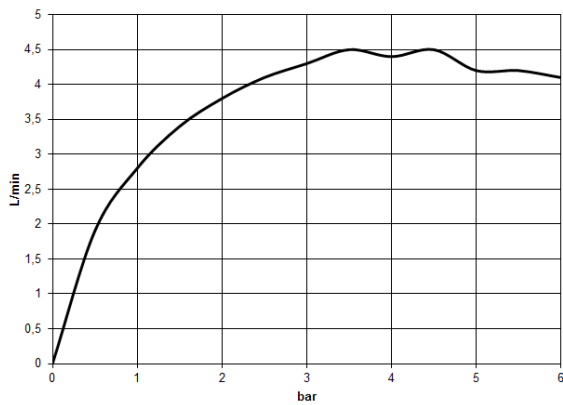


13 800 705

mm [inches]



Flow rate chart



Codes & Standards

ASME
A112.18.1/CSA
B125.1

California Energy
Commission
(CEC)

NSF/ANSI 372

NSF/ANSI/CAN
61

Water Sense





CL.1 Lavatory spout, wall-mounted without drain - Chrome

CL.1

13 800 705

Certificates

IAPMO_N-4

IAPMO_8834

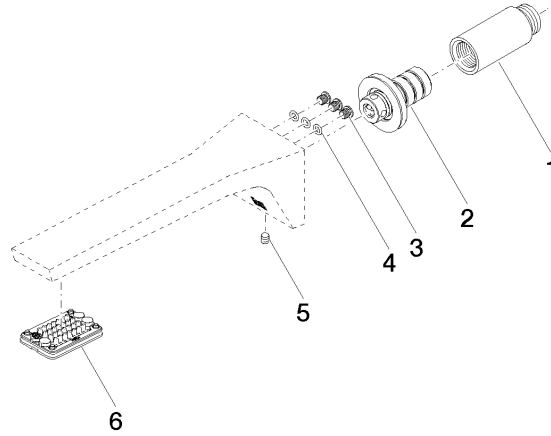
LGA_28

IAPMO_6

WRAS_1512

IAPMO_4976

13 800 705



Spare parts list

Number	Item Number	Designation	Number of units	Lead time
1	09 24 03 081 10 90	Extension 1/2" x 50 mm -	1	2
2	90 24 03 108 01 90	Nipple Ø 40 x 50 mm, 1.2 gpm -	1	2
3	09 30 30 113 20 90	Mounting bracket Ø 8 x 6,5 mm -	3	2
4	09 14 10 001 90	O-Ring EPDM 70 4,5 x 1,5 mm -	3	2
5	90 31 11 004 00 90	Mounting bracket -	1	2
6	90 11 02 297 00 90	Aerator 33 x 33 x 80 mm -	1	2